



Information Leaflet for prospective families



frogstonprimary.wordpress.com

 [@frogstonps](https://twitter.com/frogstonps)

Headteacher's Welcome

Dear parents and carers,

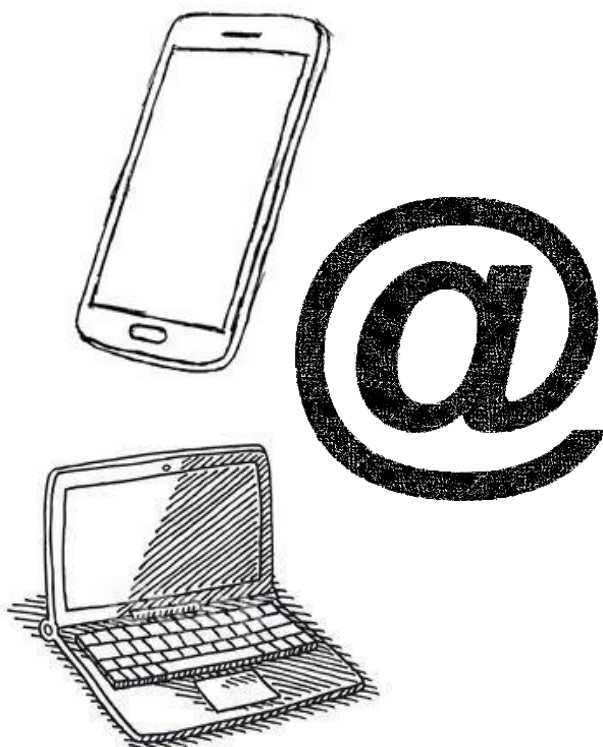
Welcome to Frogston Primary School. Frogston is a primary school in South East Edinburgh established in August 2020. We are the first brand new school to be opened in Edinburgh since the 1980s. The school is situated within the new housing development to the south of Frogston Road East with an outstanding new building and extensive, beautifully landscaped grounds. We will use our environment, both indoors and out, to promote excitement, innovation, creativity and independence in all teaching and learning opportunities. The school will have capacity for 420 pupils, alongside an early learning and childcare facility with capacity for 80 pupils.

We began our journey with a single Primary 1 class in our temporary location of Valley Park Community Centre as, due to the pandemic, the completion of our building was delayed. However, we're excited to be moving to our new site during the summer term, ready for our full opening in August 2021.

Further information about enrolment and the life of our school can be found in the rest of this leaflet. Should you want more information, please do not hesitate to get in touch. Contact details can be found below. Meanwhile, we thank you for your interest in Frogston and look forward to partnering with you and your children after the summer.

Best wishes,

Lorraine



Contact details

Headteacher: Lorraine Lawrie
lorraine.lawrie@ea.edin.sch.uk

Business Manager: Elaine O'Donnell
elaine.odonnell@ea.edin.sch.uk

Administrator: Roisin Forrester
roisin.forrester@ea.edin.sch.uk

Phone: 07517 132045

School Times

Soft start 8.35-8.45am

Children can arrive in school from 8.35am.

All start 8.45am

Latest arrival at school should be 8.45am.

P1-2 Finish 2.50pm (Mon-Thur)

12.10pm (Friday)

P3-7 Finish 3.10pm (Mon-Thur)

12.20pm (Friday)



Lunches

All children in P1-P3 are entitled to free school meals.

We use ParentPay for lunch selections and payments. ParentPay account activation details will be issued when the children join us in August.

Parent Council

We have an amazing and dedicated Parent Council. They would love to hear from you and would be happy to answer any questions you may have. Please feel free to get in touch on the email address below

frogstonparentcouncil@outlook.com

You can also visit their Frogston Primary School Parent Forum Facebook page.

Breakfast Club

Our breakfast club runs each morning from 7.45-8.35am at a cost of £2 per day per pupil. If you would like to reserve a place at Breakfast Club, please contact the school administrator, Roisin.

If you have a Free School Meal entitlement, please speak to Lorraine about a subsidised place.

P2-P7 Enrolment

Enrolment of P2-P7 children will take place week beginning 31 May 2021.

We will add the form to the website and email a copy to all families that completed the expression of interest form.

After School Club

Our After School Club will be managed by Spring Oscars. To register your interest, please contact them on the email address below.

springoscars@actionforchildren.org.uk



Vision, Values and Aims

We have established a strong ethos with our Primary 1 class this year and developed an environment that inspires and motivates children to develop their skills for life. We have high aspirations for all our children where all ambition is encouraged and achievements are celebrated daily and also through pupil profiles and achievement assemblies. We are committed to supporting the development of the whole pupil and wish to encourage their development in spiritual, moral, social, and cultural terms.

Play-based Approaches and Active Learning

Play-based learning and active learning approaches to teaching and learning are embedded in the design for the school building and grounds. This enables flexibility in our variety of whole-class teaching and work with smaller, differentiated or mixed-ability groups. In younger years, teachers facilitate challenge through their choice of continuous provision for play and maintain an awareness of next steps for individual children. Teachers can interact with children through play to meet these next steps in line with the children's interests and stage of development.

Further up the school, through effective use of classrooms and shared areas, all learners will be enabled to apply their own creativity, transferable skills and problem-solving activity through collaborative work and engaging with digital technology. As a result, learning and teaching will remain significantly play-based, playful and highly motivating at every stage of the learners' journey.

School improvement

Our priority for our first three years focus on establishing our school ethos, vision, values and aims. We are developing our teaching and learning approaches to incorporate and make best use of our spaces both inside and out. Additionally, we will be developing our community and partnerships not only with our families but also our cluster schools, local businesses, education organisations and the wider communities in our catchment area.

